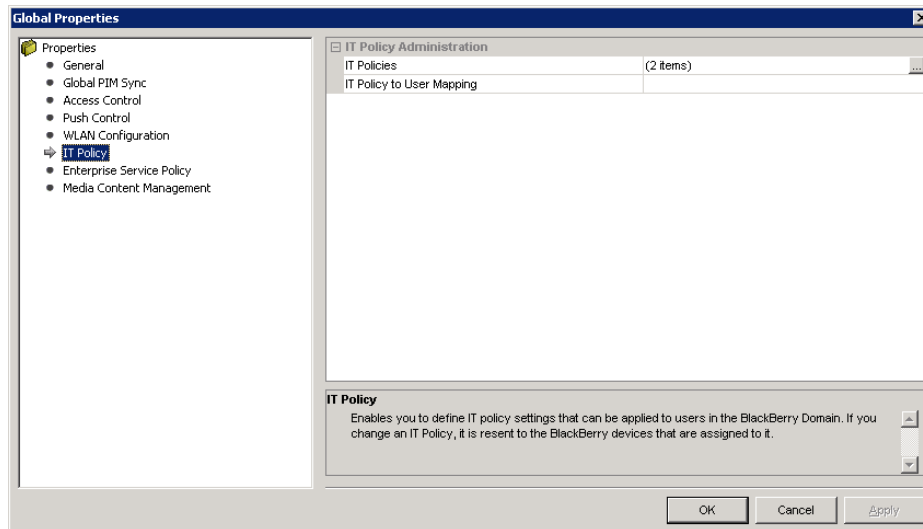
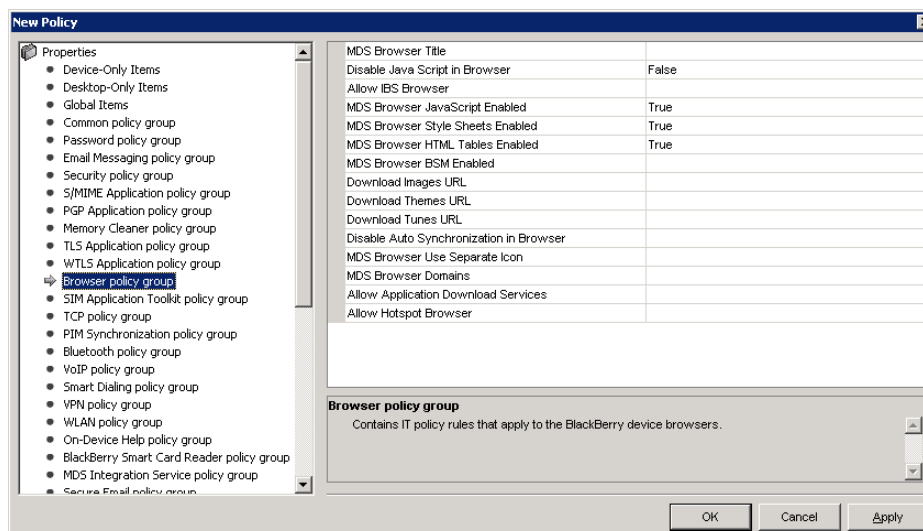


How to setup a BES IT policy to enable Javascript, style sheets and html tables

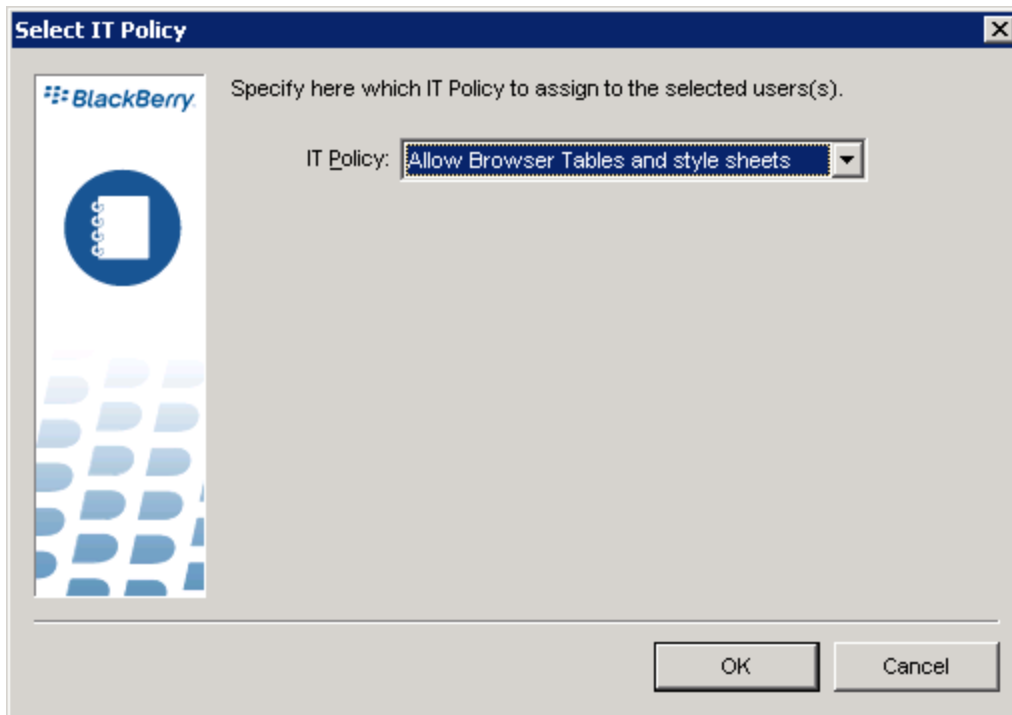
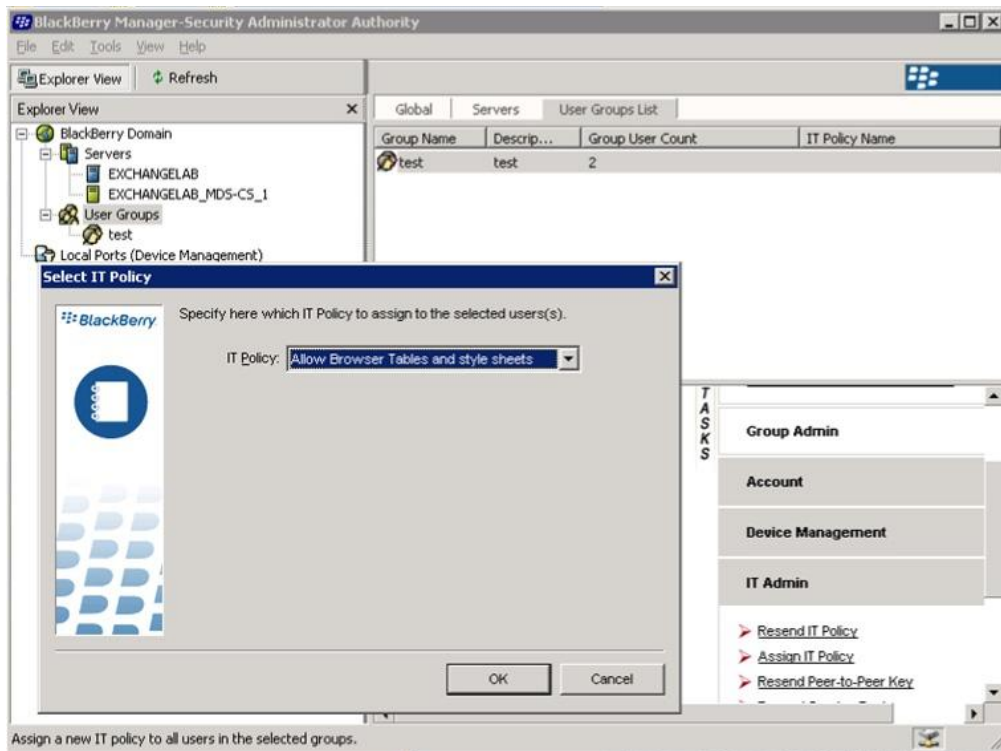
1. From the Global tab of the BlackBerry® Domain, click Edit Properties.
2. Click IT Policy.



3. Double-click the IT Policies field. The IT Policies dialog box opens



4. Assign MDS browser JavaScript Enabled TRUE
5. Assign MDS browser Style Sheets Enabled TRUE
6. Assign MDS browser html tables Enabled TRUE



7. Go to Users or groups
8. Right click on the user or group
9. Assign IT policy
10. Select the It policy created
11. Resend it policy